



 **basIP**

**INTERCOM
SOLUTIONS**



FEATURES OF THE BAS-IP SYSTEM

ABOUT US

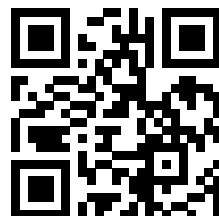
BAS-IP is the international technology company focused in the development and manufacture of IP intercom products, access control and communications.

Product portfolio of BAS-IP includes Video & Audio door entry intercoms, mobile APPs for intercom, Mobile access credentials, IP public address systems.

Since 2008, the company has been keeping attention to design of products, simplicity and usability, as well as ensuring that all devices function effectively.

Personalised approach to every project helps to find best solution for every partner.

OUR WEBSITE



1 THE BAS-IP SYSTEM WORKS OVER A LOCAL NETWORK

The BAS-IP system uses standard PoE or 12V power supply simultaneously.

3 APPS FOR MOBILE DEVICES

Applications allow you to: accept a call, see a guest, open the door remotely, or simply open the door without contact.

5 TARGETED ADVERTISEMENTS

Unit panels can present informational or promotional messages on their screens in standby mode or when motion is detected in front of the panel.

7 INTEGRATION WITH IP CCTV

Video from outdoor panels can be transmitted to NVR for continuous recording and monitoring. IP cameras can be viewed on BAS-IP monitors.

9 CUSTOMIZATION OF GUI DEVICES

It gives you almost limitless possibilities for controlling your home automation from one device.

11 INTEGRATION INTO «SMART HOME»

The SIP protocol also allows you to connect the intercom to the "Smart Home" and receive calls to any SIP client device. An indispensable function when you need to combine many manufacturers and manage devices from one platform.

13 SIP TELEPHONY

Calls from the outdoor panel can be routed not only to the BAS-IP monitors, but also to any SIP device.

2 FLEXIBLE SCALABILITY OF THE SYSTEM

All manufactured equipment is compatible and easily interchangeable if necessary to expand projects.

4 DEVELOPMENT OF INDIVIDUAL INTERFACES

Besides standardized solutions suitable for most tasks, BAS-IP can offer the development of unique individual interfaces for projects.

6 CONTACTLESS ACCESS SOLUTIONS

BAS-IP presents new contactless solutions that we need so much in these times. The advantage of these solutions is that they can be used to close almost any object.

8 THE ABILITY TO INSTALL THIRD-PARTY APPS

The panels have screens with an intuitive graphical interface and a user-friendly guestbook to display company logos or photographs of apartment owners.

10 CONNECTING MOTION SENSORS

The ability to connect motion sensors to monitors on Android OS to record video from connected video cameras.

12 COMMUNICATION WITH THE CONCIERGE, SECURITY OR MANAGEMENT COMPANY

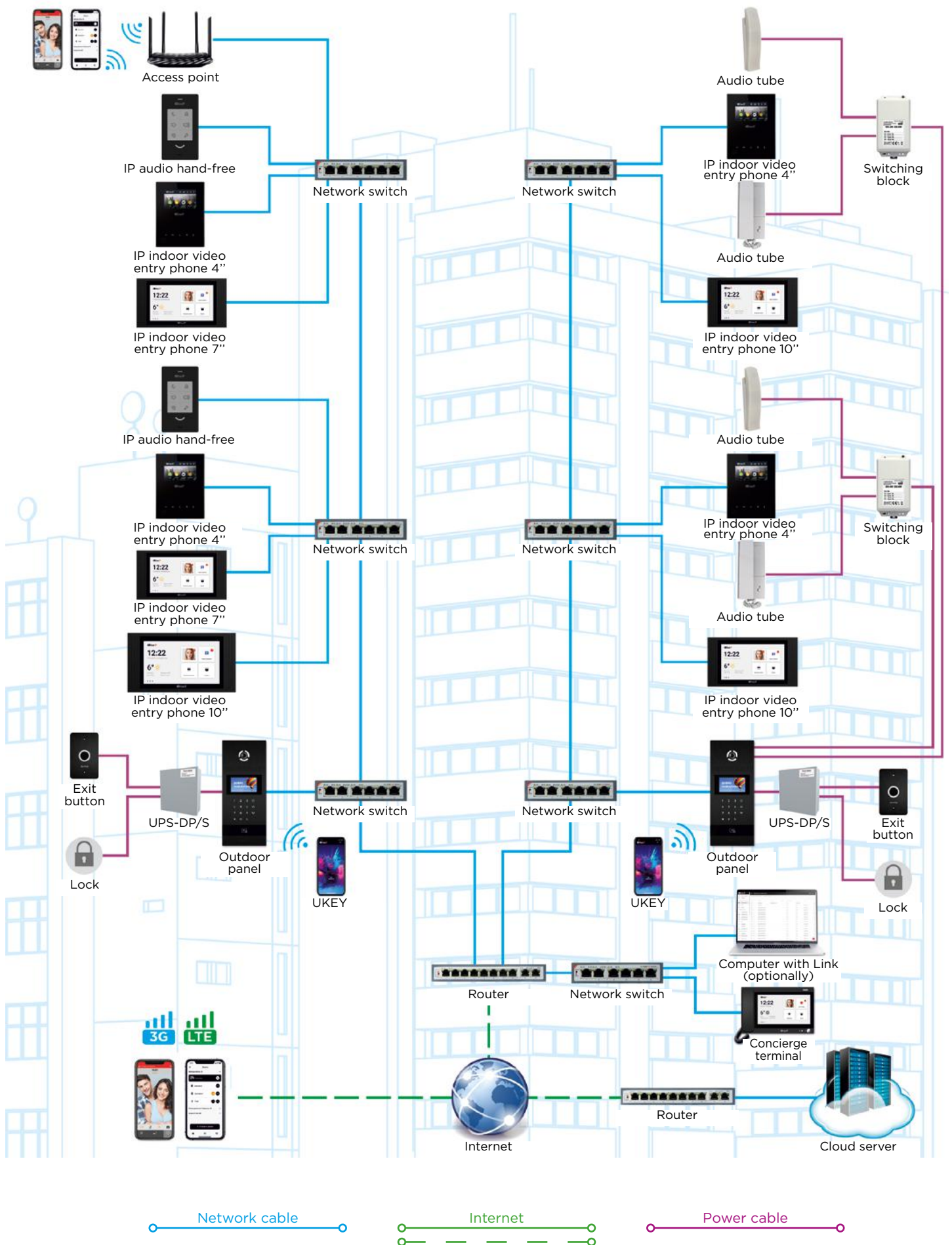
By pressing one button on the device in the apartment, residents of the complex can contact the concierge or security of the complex.

14 OPEN API

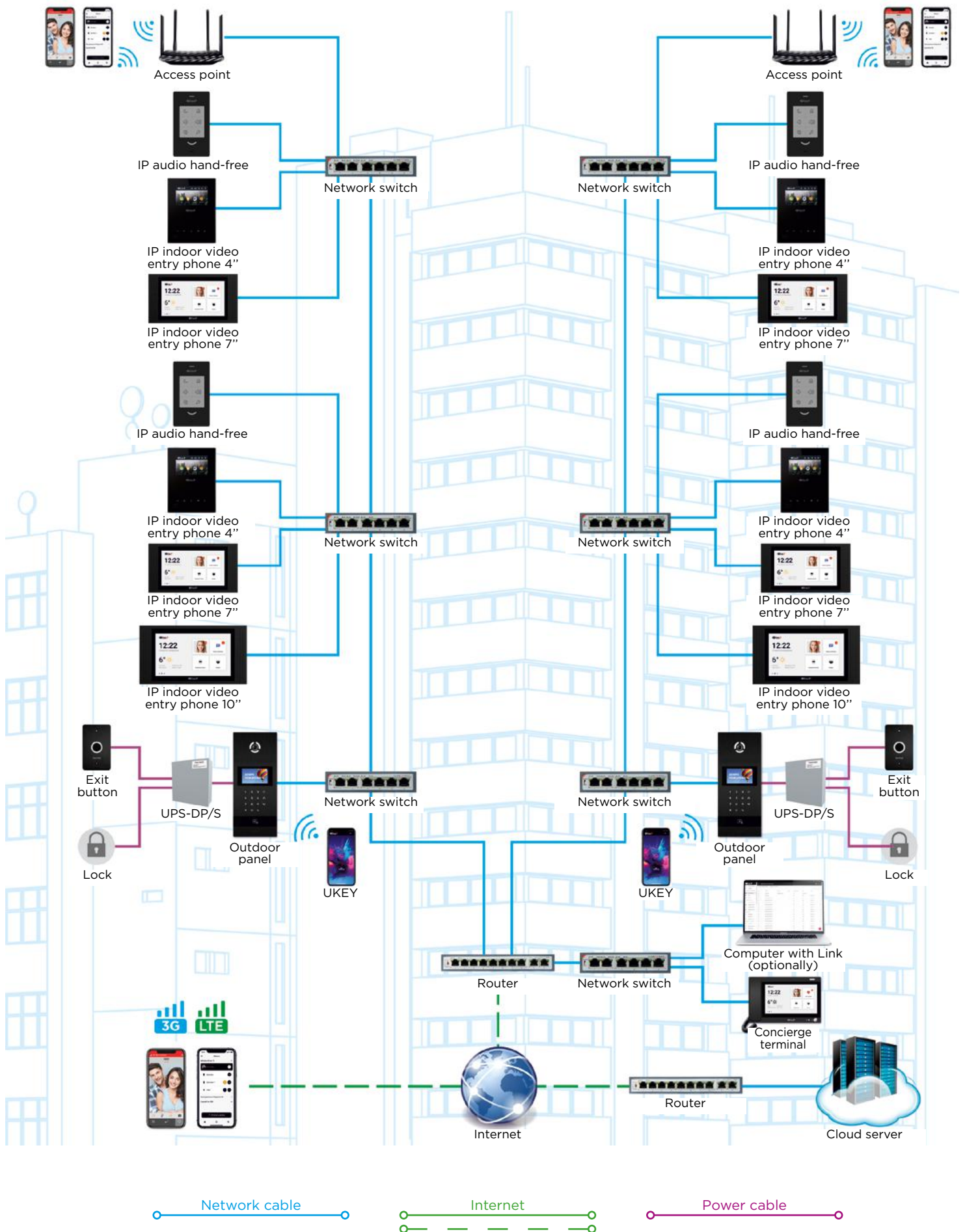
The BAS-IP R&D team has implemented a JSON API to support large projects, where an intercom system is a part of a large software complex.



Hybrid connection diagram



General connection diagram





ENTRANCE PANELS MAIN FEATURES



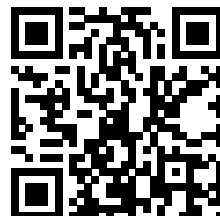
BAS-IP ENTRANCE PANELS

In front of almost every house or building, you can always see a doorbell or door entry panel. For the most part, they are old and extremely primitive.

But progress continues, and every day more and more people prefer modern, functional IP door stations. The IP entry panel transmits data through a local network, which greatly improves signal quality and makes it possible to build the intercom network over unlimited distances.

BAS-IP offers a wide range of outdoor entrance panels. Outdoor panels can be installed on a residential apartment building or a private house, on commercial real estate, and even hospitals. As an option, door entry panels can be equipped with our branded access control readers.

MORE ABOUT ENTRANCE PANELS





1 **DEVICE CUSTOMISATION**

An extraordinary solution that will emphasize the uniqueness of any project. The uniqueness of the equipment is a trend in various design solutions.

3 **INDUCTION LOOP CONNECTION**

The installation of an induction loop ensures high-quality transmission of the audio signal from the entrance panel to cochlear implants and hearing aids of hearing impaired people.

5 **MOBILE IDENTIFICATION UKEY (EM-MARIN/ MIFARE®/NFC/BLUETOOTH)**

Now if you need to get into your house or office space, you will inevitably face a situation where you need to constantly carry different keychains and access cards. They are also quite easy to lose, and it is not always convenient to use them.

Now to open the doors, all you need is your smartphone with the application installed.

7 **MULTI-FACTOR AUTHENTICATION**

You can configure the need to use from 2 to 6 identifiers of different types: guest access by QR code / face recognition / pin / keyfob or access card / mobile identifier UKEY / license plates.

9 **CONTACTLESS TEMPERATURE MEASUREMENT MODULE**

BAS-IP presents new contactless solutions that we need so much in these times. The advantage of these solutions is that they can be used to close almost any object.

Contactless solutions can implement the functions of a doorbell, exit button and call panel.

By connecting an additional contactless call button, you can duplicate a call to the concierge, reducing the number of physical contacts with devices.

2 **VANDALPROOF DESIGN**

Includes: heavy-duty 3 mm stainless steel / special secret screws / armored films on the screen / a special mode of operation of the panel, in which it is impossible to close the contacts and open the door from the outside / Braille.

4 **PROXIMITY SENSOR**

Besides standardized solutions suitable for most tasks, BAS-IP can offer the development of unique individual interfaces for projects.

6 **FACE RECOGNITION TECHNOLOGY**

BAS-IP outdoor panels have a face recognition function. This is a visitor identification technology integrated into BAS-IP outdoor panels and operates in low light conditions. When the tenant is identified, the door station can automatically open the door and call the lift, and voice any important message or useful information about the house.

8 **GUEST CAR PASSES**

The functionality allows integrating BAS-IP entrance panels with cameras* for license plates recognition and further opening of the barrier for cars whose numbers are stored in the panel's memory.

The main function of the car numbers recognition system is to automate the control of car access to protected areas, eliminating the influence of the human factor, as well as organizing automatic opening of the barrier when cars enter / leave the territory.

10 **OPEN API**

The BAS-IP R&D team has implemented a JSON API to support large projects, where an intercom system is a part of a large software complex.

GUEST CAR PASSES AND LIFT CONTROL

GUEST CAR PASSES

The functionality allows integrating BAS-IP entrance panels with cameras* for license plates recognition and further opening of the barrier for cars whose numbers are stored in the panel's memory.

The main function of the car numbers recognition system is to automate the control of car access to protected areas, eliminating the influence of the human factor, as well as organizing automatic opening of the barrier when cars enter / leave the territory.

HOW IT WORK?



Setting the camera to send numbers to the entrance panel

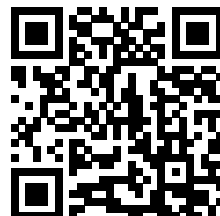


Adding license plates to the entrance panel memory

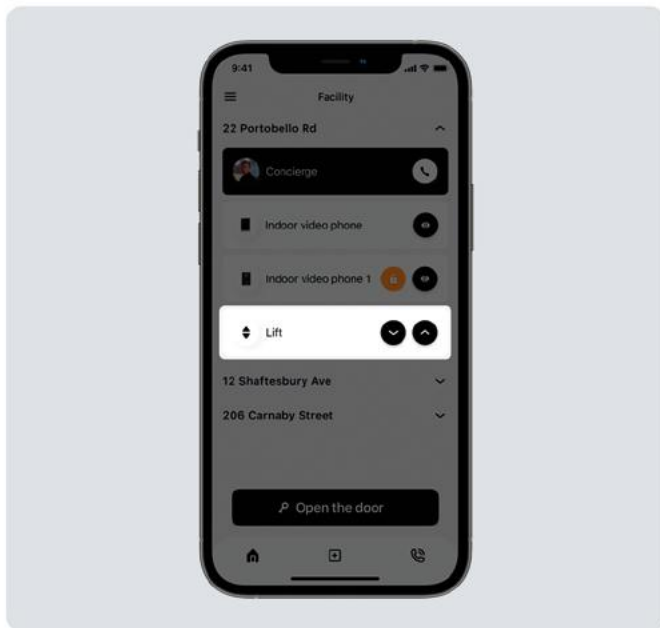


Reading the license plates by the camera and opening the barrier by the panel

AVAILABLE AND SUPPORTED IN THE FOLLOWING COUNTRIES



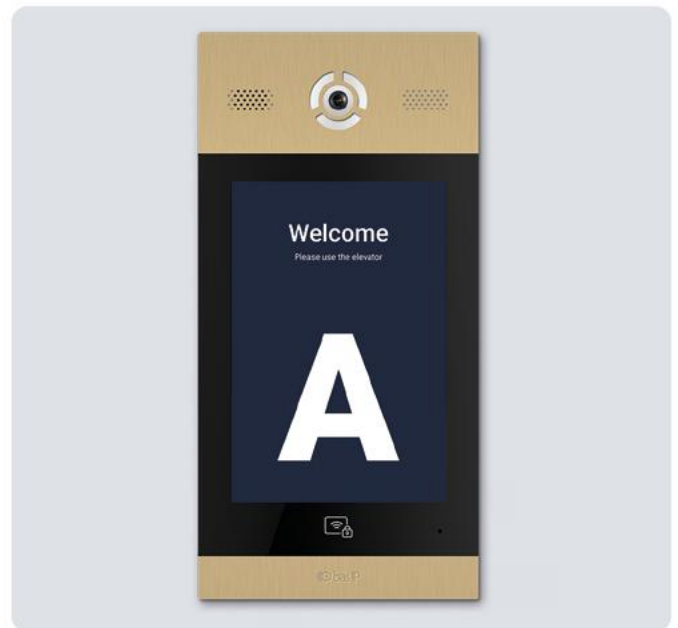
LIFT WORK



LIFT CALL

The ability to call the lift from the monitor and mobile app to your floor, as well as from the moment the lock is opened from the monitor to the floor of the panel from which the call was made.

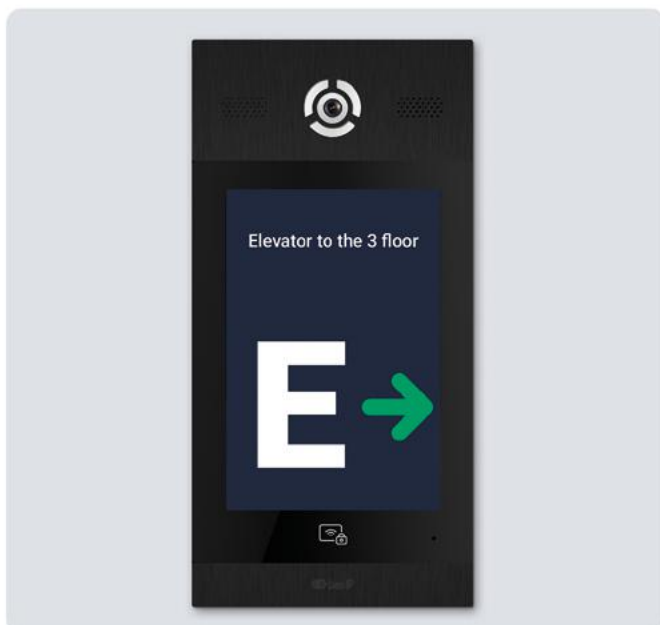
In addition, from the Link admin panel it is possible to call the lift to any floor.



LIFT NUMBER DISPLAY

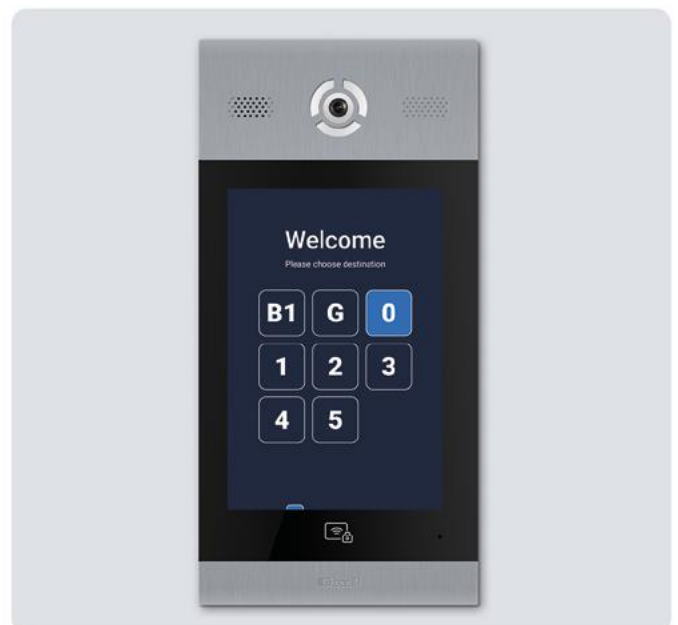
Setting the display of the desired lift number on the screen of multi-apartment entrance panels after the concierge or tenant opens the doors.

This allows the visitor to coordinate which elevator to go to.



LIFT MAPPING

In large residential complexes, where there are many entrance groups and lifts, it is possible to display mapping to the required lift on the screen of multi-apartment entrance panels (panels AA-14FB and AA-15FB).



RESTRICTION ON THE USE OF THE LIFT

In the Link software, for any type of identifier, it is possible to specify a list of floors that the lift can move to.

Thus, residents, guests or visitors will be able to go up / down only those floors that are provided by the administration of the management company.



THE LINK SOFTWARE AND LINK APP

ABOUT OUR SOFTWARE

BAS-IP Link is software for BAS-IP equipment and realizing centralized access control in residential complexes and office centres of varying complexity.

BAS-IP Link has a wide range of capabilities, including setting access rights for all residents/employees, providing guest access (access for a specified period of time to certain doors or zones), organizing newsletters, conducting user surveys and much more.

The software has an intuitive web-based interface, which makes it very practical. It's adapted to work with a computer as well as a mobile phone.

MORE ABOUT LINK





THE LINK SOFTWARE

The Link software offers a centralized access control allowing you to connect with BAS-IP equipment in residential complexes and office centers of differing complexity. It allows you to flexibly manage all the functionality of the intercom system from anywhere in the world.

You can work with Link on any device: a computer, a tablet, or a smartphone running any operating system.

1 SYSTEM LOGGING AND MANAGING

You can record all events from devices including identifiers, entered codes, opening locks from called devices, calls, and all actions within the system.

3 FACE ID SUPPORT

The ability to upload photos of residents to Link, where they will be converted into hashes and transmitted to the panel, like other identifiers.

5 REDIRECTION TO LINK SOFTWARE

Required to receive calls from different SIP subscribers. When a call from the department arrives at different nurses in the hospital at different times of the day.

7 RECEIVING CALLS FROM PANELS IN LINK SOFTWARE

Thanks to the built-in SIP client in the Link web interface, the concierge can: make and receive audio and video calls / open the lock / view call history.

9 BUILT-IN SIP SERVER

The built-in SIP server allows you to make calls between devices/mobile apps. The administrator can set up flexible forwarding rules for each day and view call logs.

2 TYPES OF USERS

There are several types of users in the system: Administrator, Concierge, User. Each type of account has its own set of administration options.

4 SERVER-SIDE ADMISSION DECISION MAKING

In this mode, the outdoor panels do not store data about identifiers and codes, but they transmit them to the server to decide on admission, which provides additional security since information is stored strictly on the server.

6 SUPPORT TO WORK WITH ANY LIFT

Capability: calling the lift from the monitor and mobile app to your floor / lift call by concierge from the Link admin panel to any floor and etc.

8 SUPPORT FOR WORKING WITH CAR IDS

Using the Link software, you can enter car numbers into a single database of all identifiers with their subsequent duplication into the panels memory.

10 MANAGEMENT FROM ANYWHERE IN THE WORLD

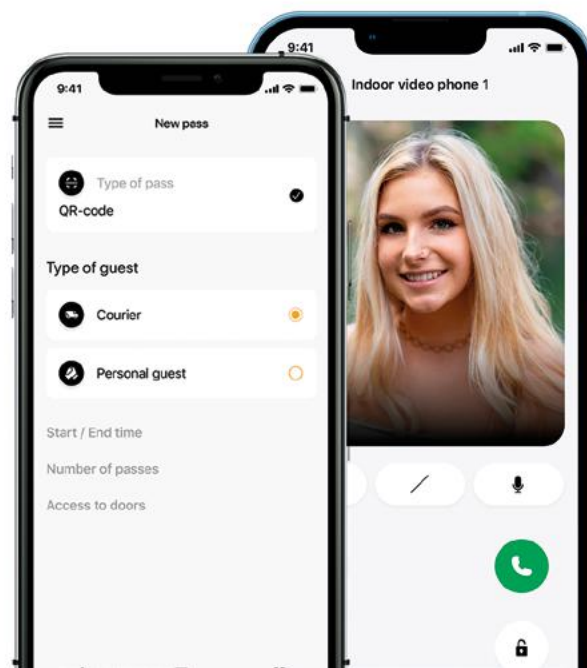
Allows you to connect the device to the server from anywhere in the world, without the need to change the network equipment settings.

LINK APP

BAS-IP Link is an app with which you can receive video calls from BAS-IP entrance panels to your mobile device, open the lock via Bluetooth, NFC, call the lift and create guest passes. This is smart access control in the hands of the user.

The main features of the application are: support for push notifications for incoming calls; video support before reply; ability to add multiple properties; ability to issue guest passes: QR codes, access codes and links; ability to call the lift, opening the lock using UKEY technology, access to call archive, invite family members.

For the app to work, the use of the Link server is required.



MULTI-APARTMENT AND INDIVIDUAL ENTRANCE PANELS



AA-14FB BLACK / SILVER / GOLD



AA-15FB BLACK / SILVER

Available 2023



AA-12FB BLACK / SILVER / GOLD



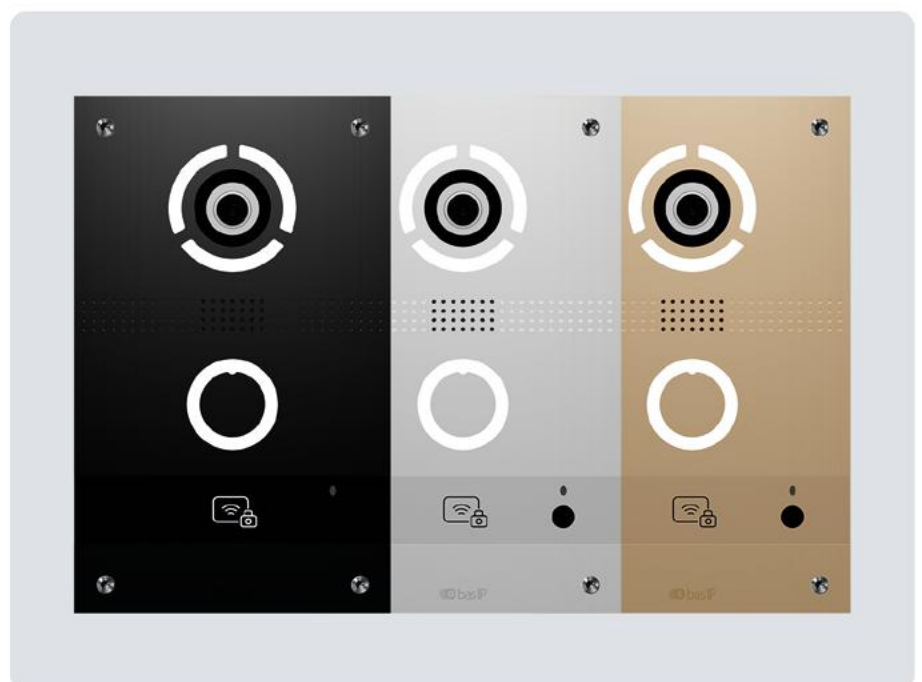
AA-07FB SILVER / STAINLESS STEEL



AA-07BD SILVER



**BI-02 / 04 / 08 / 12 FB
BLACK / SILVER / GOLD**



AV-08FB BLACK / SILVER / GOLD

INDIVIDUAL ENTRANCE PANELS AND INDOOR MONITORS



AV-05SD GOLD / SILVER / BLACK



AV-05FD BLACK / GOLD / SILVER



AV-04SD SILVER



AV-04FD SILVER



AV-03D BLACK / SILVER



AV-03BD BLACK / SILVER



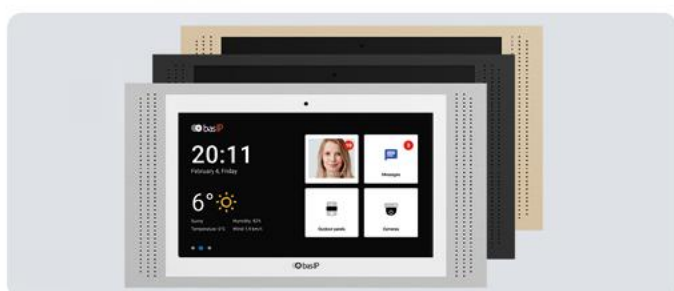
AV-04AFD GREEN / RED / SILVER



AV-01KD SILVER



CR-02BD GOLD / BLACK / SILVER



AT-10 WHITE/ BLACK / GOLD



AT-07L BLACK / WHITE / GOLD

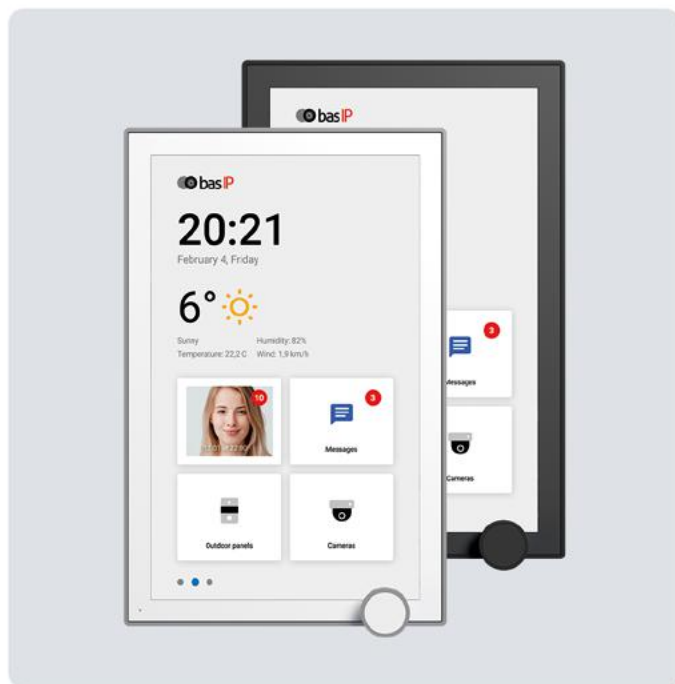


AQ-07LL BLACK / WHITE



AQ-07LW WHITE / BLACK

INDOOR MONITORS / SYSTEMS / APPS AND SOFTWARE



AZ-07LA GRAY / BLACK



AZ-07LL BLACK / GRAY



AU-04LA + SP-AU BLACK / WHITE



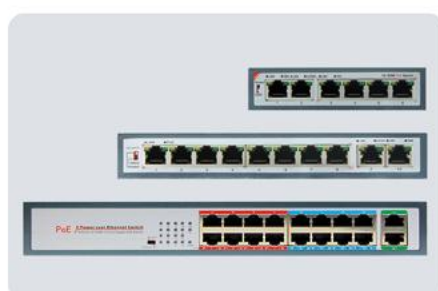
SP-03 + SP-SP WHITE / BLACK



AM-02 BLACK



CONTACTLESS SOLUTIONS



SWITCHES



2-WIRE ACCESSORIES

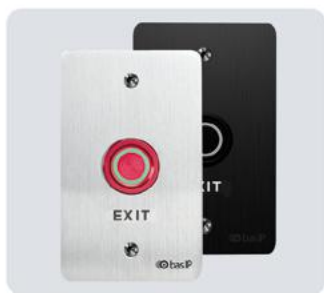


LINK SOFTWARE



LINK / INTERCOM / UKEY / UKEY CONFIG

ACCESSORIES AND BRACKETS



SH-45E



SH-45TE



UPS-DP/F BLACK



UPS-DP/S SILVER



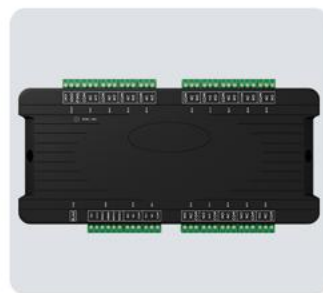
SP-AU / SP-SP



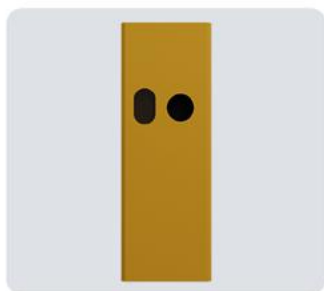
SH-02M



SH-03



EVRC-IP



SH-31TM



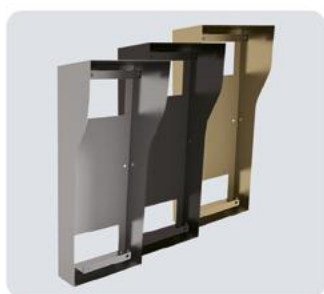
SH-42



BR-AA15



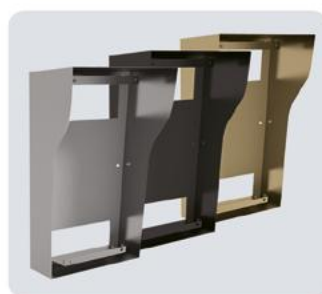
BR-AA14



BR-AA12



BR-AA



BR-AV8



BR-AV



BR-AV2



BR-SH45



BR-AT7



BR-AT10



bas-ip.com

 YouTube



 in

